

NOTICE OF EXEMPTION

TO: X Office of Planning and Research
1400 Tenth Street, Room 121
Sacramento, CA 95814

FROM: Tehama County-FCWCD
1509 Schwab Street
Red Bluff, CA 96080

☒ Office of the County Clerk-Recorder
Tehama County
633 Washington Street – Room 11
Red Bluff, CA 96080

Project Title:

Multi-benefit Thomes and Elder Creeks water service connection project.

Project Location - Specific:

Red Bluff Subbasin per DWR Bulletin 118. Coordinates: Latitude 40.01962855, Longitude -122.3556386.

Project Location –
City: unincorporated

Project Location – County
Tehama County

Description of Nature, Purpose, and Beneficiaries of Project:

Property owners along Elder and Thomes Creeks with surface water rights will be installing a water service connection to their existing water system to allow use of surface water when available. The project will involve the construction of a direct water service connection. This action covers the construction-related activities for installation of this water service connection which is an element of Red Bluff GSP implementation activities to achieve long term groundwater sustainability in the Subbasin.

Name of Public Agency Approving Project:

Tehama County Flood Control & Water Conservation District.

Name of Person or Agency Carrying Out Project:

Tehama County Flood Control & Water Conservation District.

Exempt Status: (Check one)

- ☐ Ministerial (Sec. 21080(b)(1); 15268);
☐ Declared Emergency (Sec. 21080(b)(3); 15269(a));
☐ Emergency Project (Sec. 21080(b)(4); 15269(b)(c));
☒ Categorical Exemption. State type and section number: Class 4, Section 15304, Title 14 CCR and Class 1, Section 15301, Title 14 CCR.
☐ Statutory Exemptions. State code number:

FILED

DEC 18 2025 #69

SEAN HOUGHTBY

TEHAMA COUNTY CLERK & RECORDER

BY Ariana Tepeda

Reasons why the project is exempt:

The construction activities consist of nonsignificant impacts to the condition of the land. And the construction activities occurring at existing facilities consist of nonsignificant impacts to those facilities maintaining the same purpose, function and capacity in the existing water system.

Lead Agency Contact Person:

Justin Jenson, Deputy Director

Area Code/Telephone/Extension:

530-690-0700

Signature:

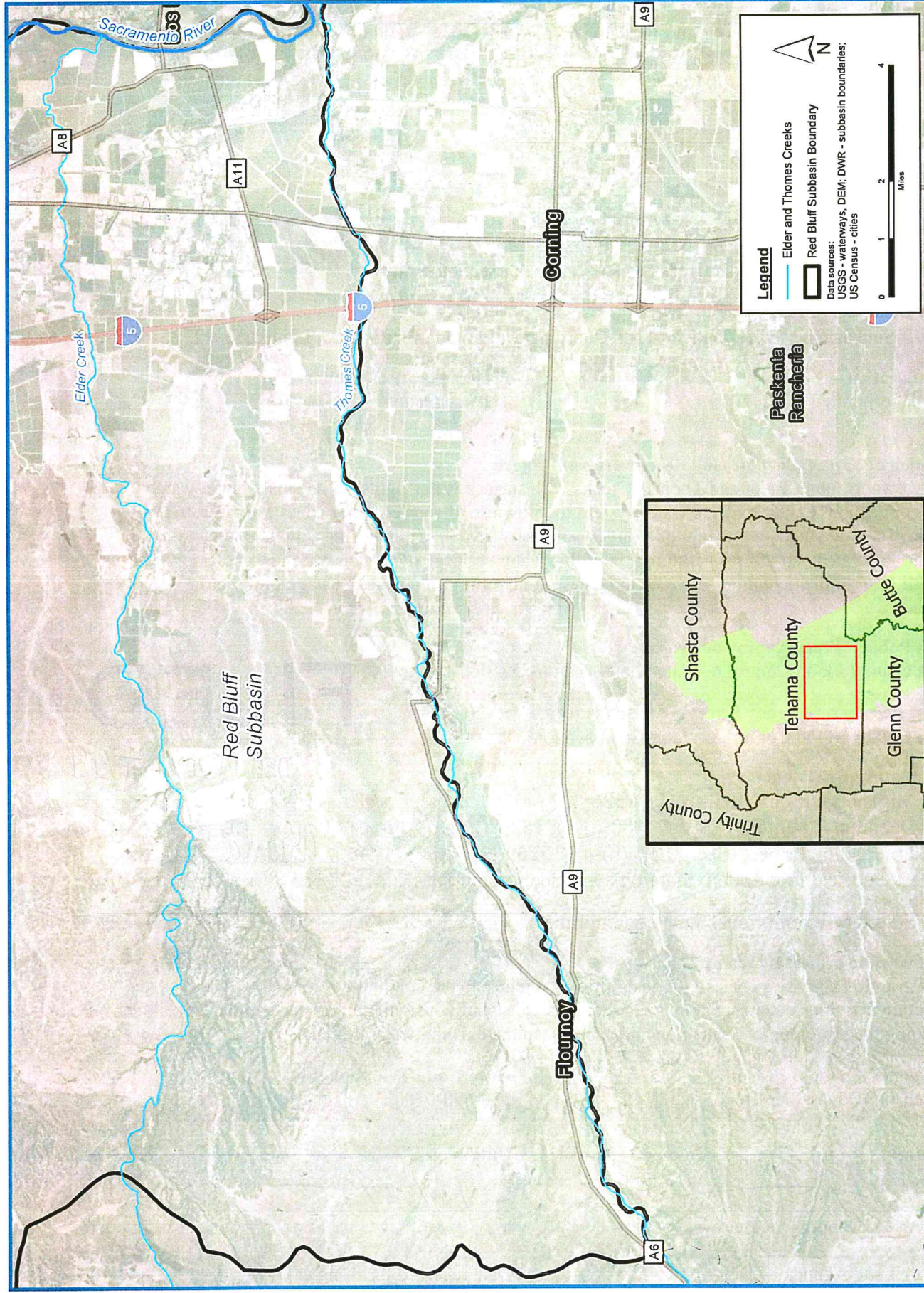
Justin Jenson
Justin Jenson, Deputy Director

Date:

12/16/25

Signed by Lead Agency

Date received for filing at OPR:



P:\Tehama County\Tehama County GSP Services\Tehama County - GSP Services.aprx:Elder and Thomas SW Connection Project NDE

Red Bluff Subbasin **Component 3, Category (b), Task 3** **Multi-Benefit Thomas and Elder Creeks Surface Water Connection Project**

Groundwater Sustainability Planning
Tehama County, California