

# Drinking Fountain Clearances



Accessibility Code

Plumbing Code

Building Code

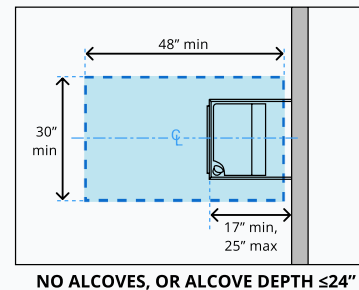
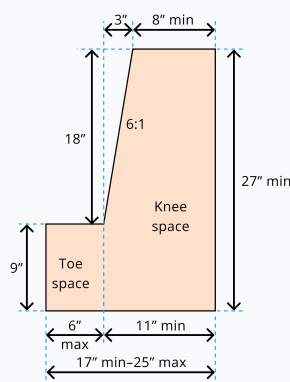
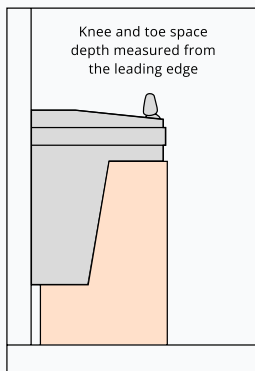
Access

ADA

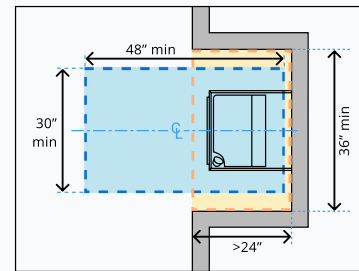
Construction Docs

Construction Phase

Design Development



NO ALCOVES, OR ALCOVE DEPTH  $\leq 24"$



RECESSED AREAS, ALCOVE  $> 24"$



## Overview

Accessible drinking fountains must provide a clear floor space complying with Section 305, positioned for a forward approach to the drinking fountain. Knee and toe space complying with Section 306 should also be provided, with the clear floor space centered on the drinking fountain.

## Primary Sections

CBC 11B-602.2 Clear Floor Space ('22)

CBC 11B-602.2 Clear Floor Space ('22)

ABA Standards, 602.2 Clear Floor Space ('15)

