

# Bottle Fillers and Drinking Fountain Alts.

Accessibility Code

Plumbing Code

Building Code

Plumbing

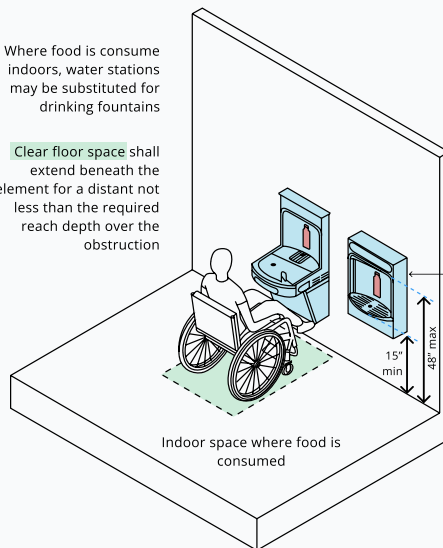
Access

Construction Docs

## BOTTLE FILLERS AND DRINKING FOUNTAIN ALTERNATIVES

Where food is consumed indoors, water stations may be substituted for drinking fountains

Clear floor space shall extend beneath the element for a distance not less than the required reach depth over the obstruction



### REQUIRED QUANTITY OF BOTTLE FILLING STATIONS

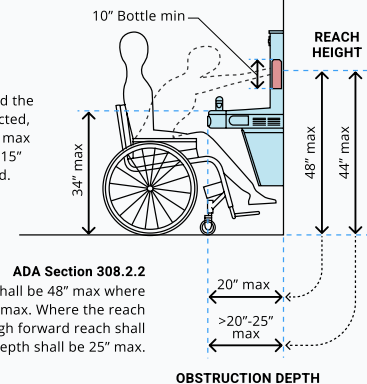
Where bottle filling stations are replacing required drinking fountains where food is consumed up to 50% of the required drinking fountains may be bottle filling stations. Where the occupant load is 30 or less a drinking fountain or bottle filling station is not required.

### BOTTLE FILLING STATION

A plumbing fixture connected to the potable water distribution system and sanitary drainage system that is designed and intended for filling personal use drinking water bottles or containers not less than 10" in height. Such fixtures can be separate from or integral to a drinking fountain.

### ADA Section 308.2.1

When bottle filling stations are not integral with a drinking fountain and the forward reach is therefore unobstructed, the high forward reach shall be 48" max and the low forward reach shall be 15" min above the finish floor or ground.



### ADA Section 308.2.2

The high forward reach shall be 48" max where the reach depth is 20" max. Where the reach depth exceeds 20", the high forward reach shall be 44" max and the reach depth shall be 25" max.

## Overview

Bottle filling stations in general are not required, but the number of required drinking fountains is defined by the code. The number of required drinking fountains that serve an indoor space where food is consumed (cafeteria, lunch room, dining room) is defined in section 422 of the UPC.

Bottle filling stations may be substituted for up to 50% of the required drinking fountains that serve an area where food is consumed indoors. For bottle filling stations that need to be accessible, the mounting height is dependent on how obstructed the reach to activate the mechanism is and will vary from 44" high where the reach is obstructed to 48" where there is no obstruction.